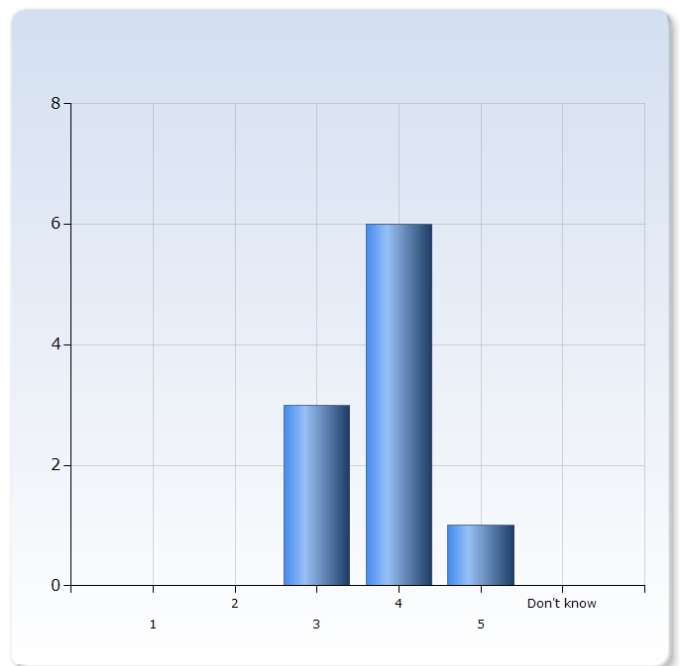


Macroeconomics II

Respondents: 15
Answer Count: 10
Answer Frequency: 66.67%

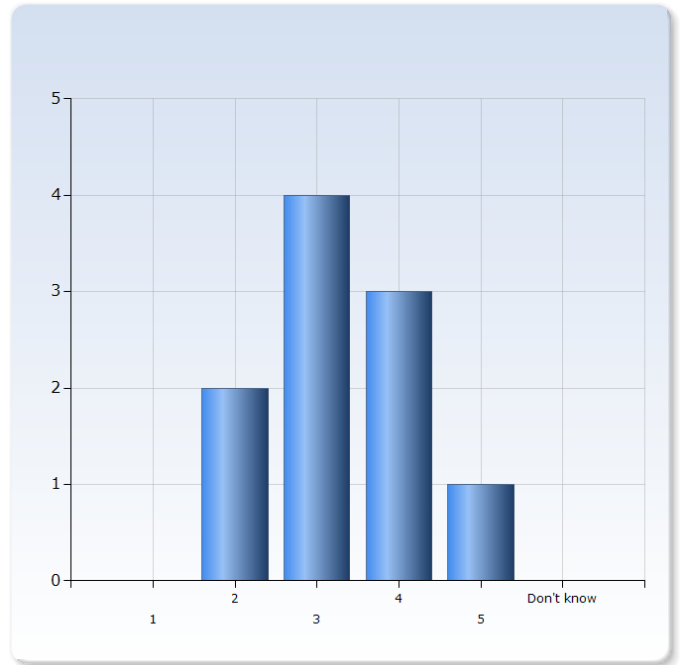
1. What is your general opinion on this course? (1=Really bad, 5=Really good)

	Number of Responses
1	0 (0.0%)
2	0 (0.0%)
3	3 (30.0%)
4	6 (60.0%)
5	1 (10.0%)
Don't know	0 (0.0%)
Total	10 (100.0%)



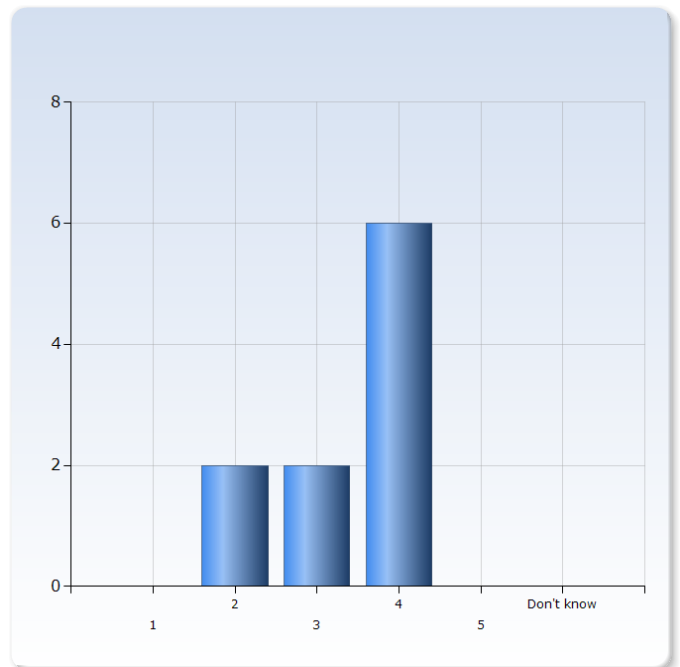
2. What is your opinion on the amount of material covered (1=Too little, 5=Too much)

	Number of Responses
1	0 (0.0%)
2	2 (20.0%)
3	4 (40.0%)
4	3 (30.0%)
5	1 (10.0%)
Don't know	0 (0.0%)
Total	10 (100.0%)



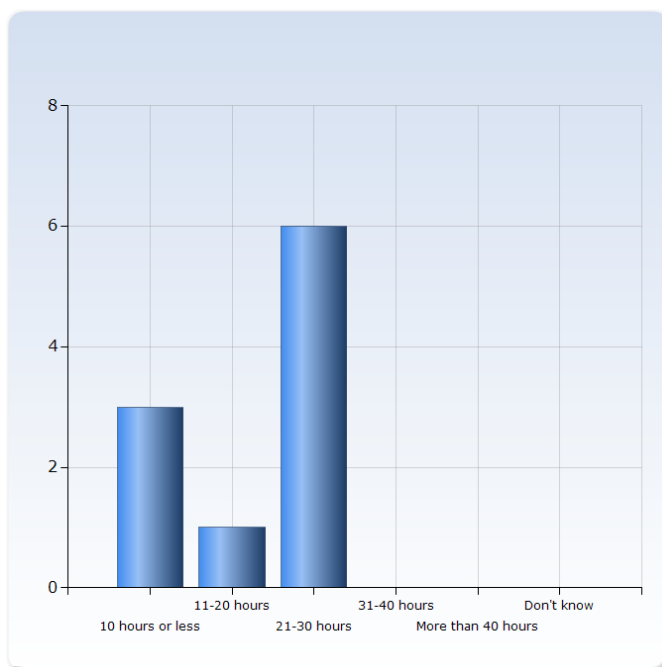
3. What is your opinion about the level of difficulty of the course (1=Really easy, 5=Really good)

	Number of Responses
1	0 (0.0%)
2	2 (20.0%)
3	2 (20.0%)
4	6 (60.0%)
5	0 (0.0%)
Don't know	0 (0.0%)
Total	10 (100.0%)



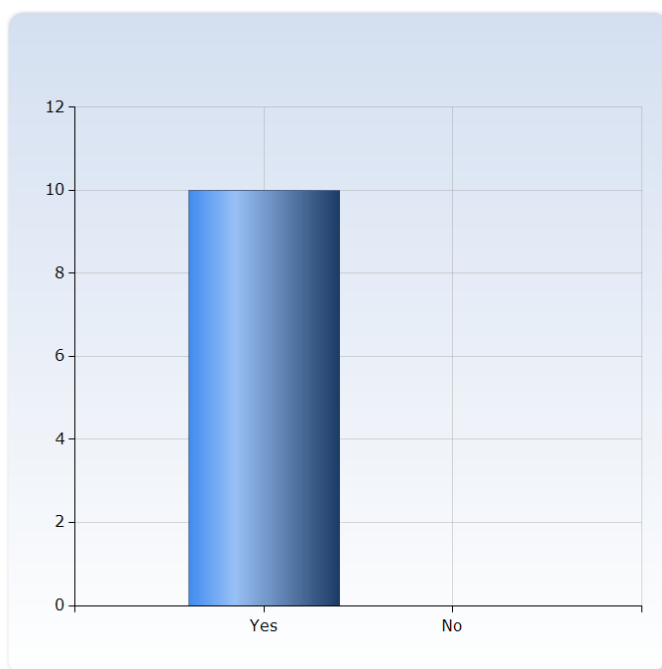
4. Approximately, how many hours per week did you spend studying during this course? (including lectures and seminars/exercises)

	Number of Responses
10 hours or less	3 (30.0%)
11-20 hours	1 (10.0%)
21-30 hours	6 (60.0%)
31-40 hours	0 (0.0%)
More than 40 hours	0 (0.0%)
Don't know	0 (0.0%)
Total	10 (100.0%)



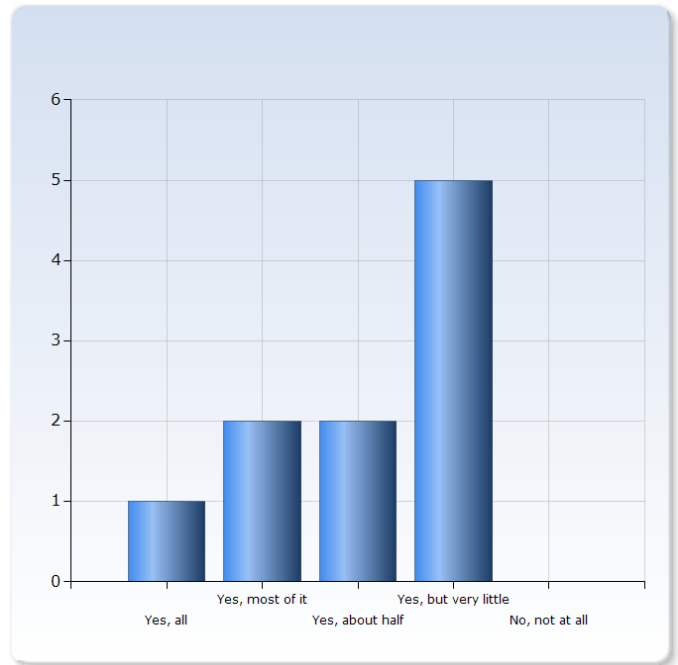
5. Did you have access to the course literature?

	Number of Responses
Yes	10 (100.0%)
No	0 (0.0%)
Total	10 (100.0%)



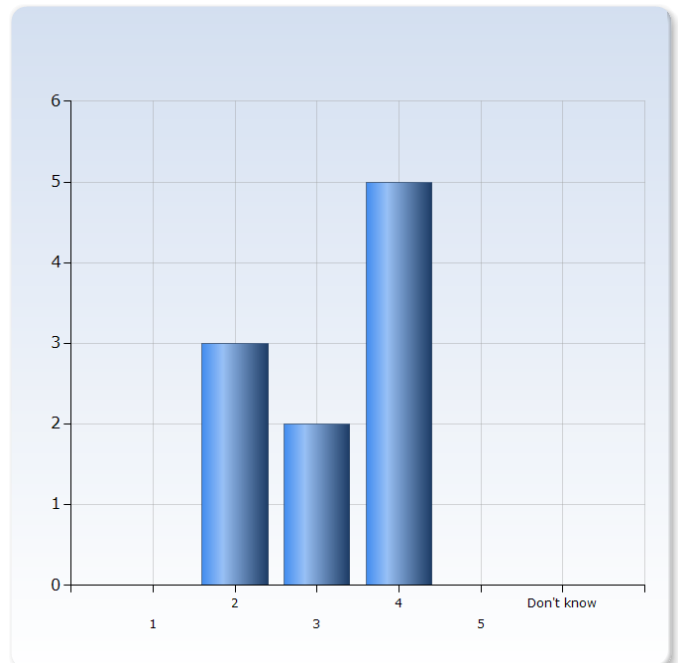
6. Have you read the course literature?

	Number of Responses
Yes, all	1 (10.0%)
Yes, most of it	2 (20.0%)
Yes, about half	2 (20.0%)
Yes, but very little	5 (50.0%)
No, not at all	0 (0.0%)
Total	10 (100.0%)



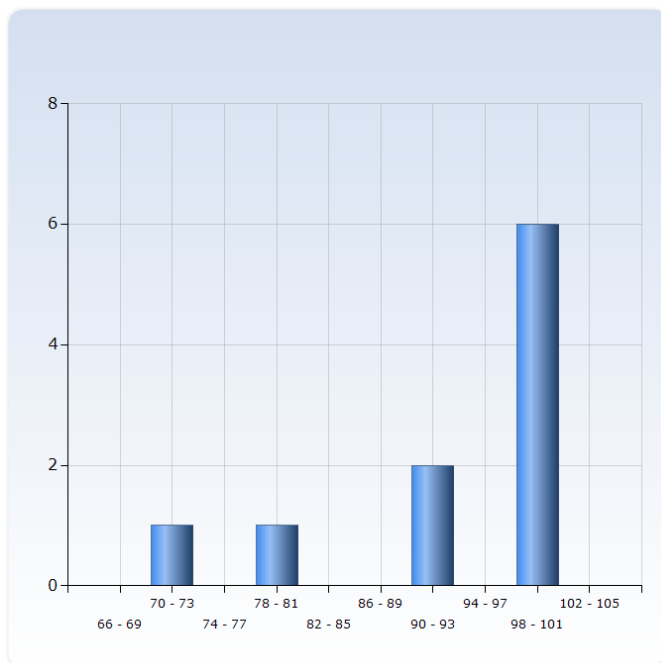
7. What is your opinion on the course literature? (1=Really bad, 5=Really good)

	Number of Responses
1	0 (0.0%)
2	3 (30.0%)
3	2 (20.0%)
4	5 (50.0%)
5	0 (0.0%)
Don't know	0 (0.0%)
Total	10 (100.0%)



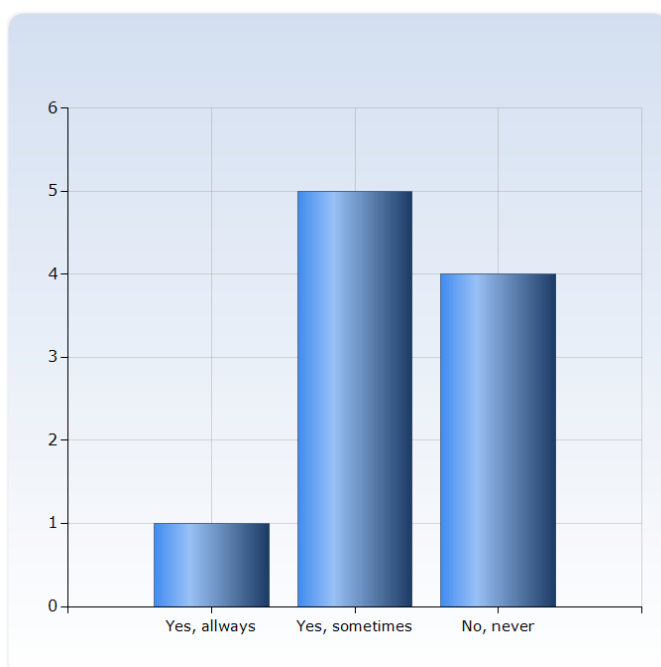
8. What percentage of lectures did you attend?

What percentage of lectures did you attend?	Number of Responses
66 - 69	0 (0.0%)
70 - 73	1 (10.0%)
74 - 77	0 (0.0%)
78 - 81	1 (10.0%)
82 - 85	0 (0.0%)
86 - 89	0 (0.0%)
90 - 93	2 (20.0%)
94 - 97	0 (0.0%)
98 - 101	6 (60.0%)
102 - 105	0 (0.0%)
Total	10 (100.0%)



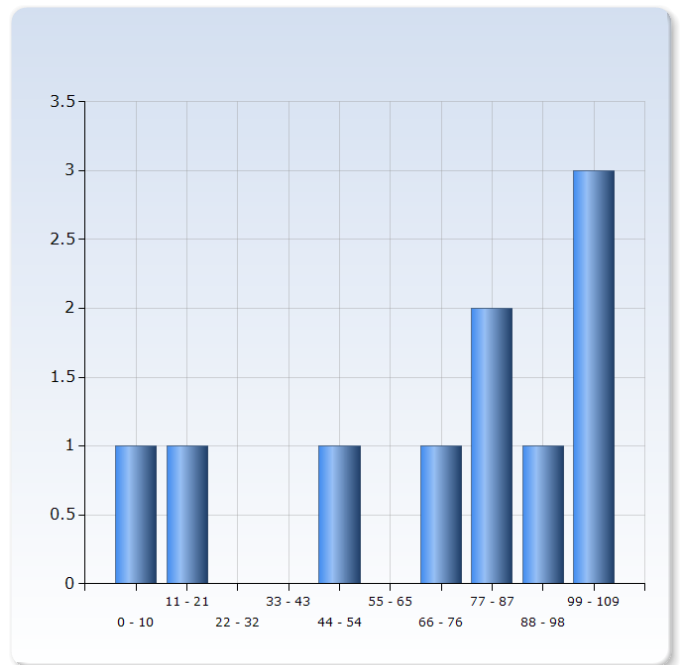
9. Did you usually read the literature before you attended lectures?

	Number of Responses
Yes, allways	1 (10.0%)
Yes, sometimes	5 (50.0%)
No, never	4 (40.0%)
Total	10 (100.0%)



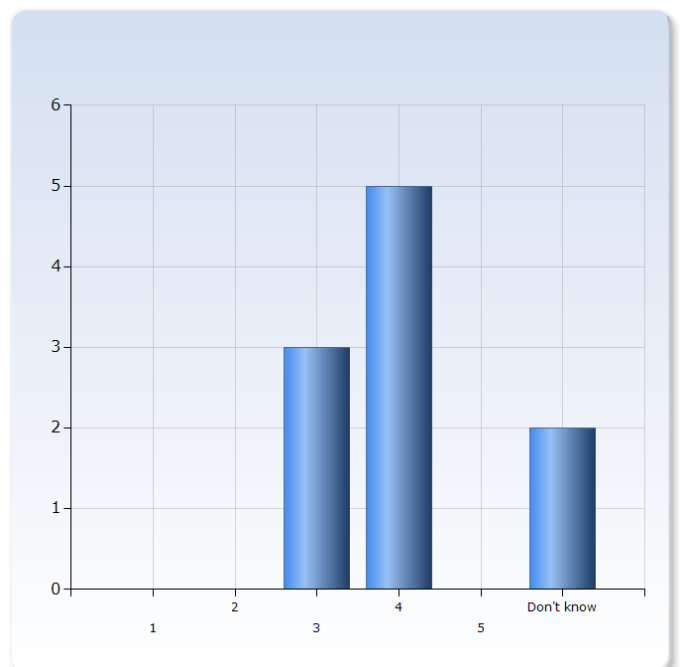
14. What percentage of TA sessions did you attend?

What percentage of TA sessions did you attend?	Number of Responses
0 - 10	1 (10.0%)
11 - 21	1 (10.0%)
22 - 32	0 (0.0%)
33 - 43	0 (0.0%)
44 - 54	1 (10.0%)
55 - 65	0 (0.0%)
66 - 76	1 (10.0%)
77 - 87	2 (20.0%)
88 - 98	1 (10.0%)
99 - 109	3 (30.0%)
Total	10 (100.0%)



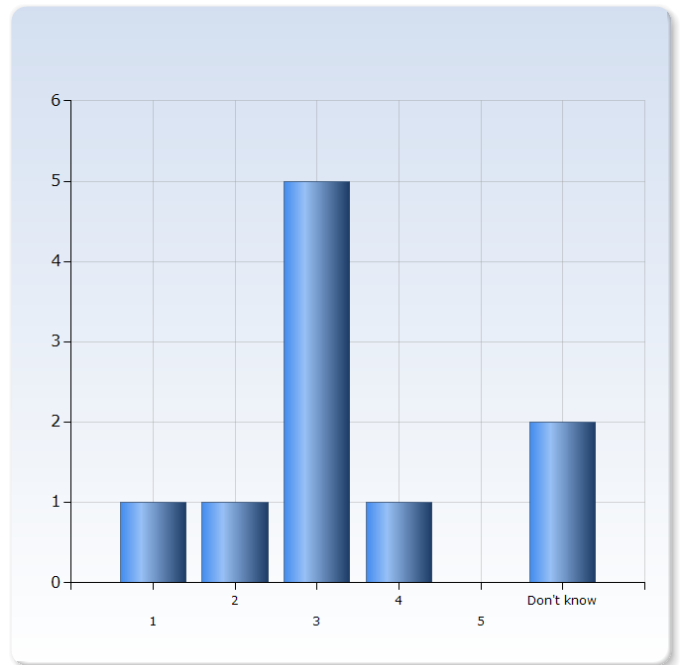
15. What is your opinion on the TA sessions with Gualtiero Azzalini? (1=Really bad, 5=Really good)

	Number of Responses
1	0 (0.0%)
2	0 (0.0%)
3	3 (30.0%)
4	5 (50.0%)
5	0 (0.0%)
Don't know	2 (20.0%)
Total	10 (100.0%)



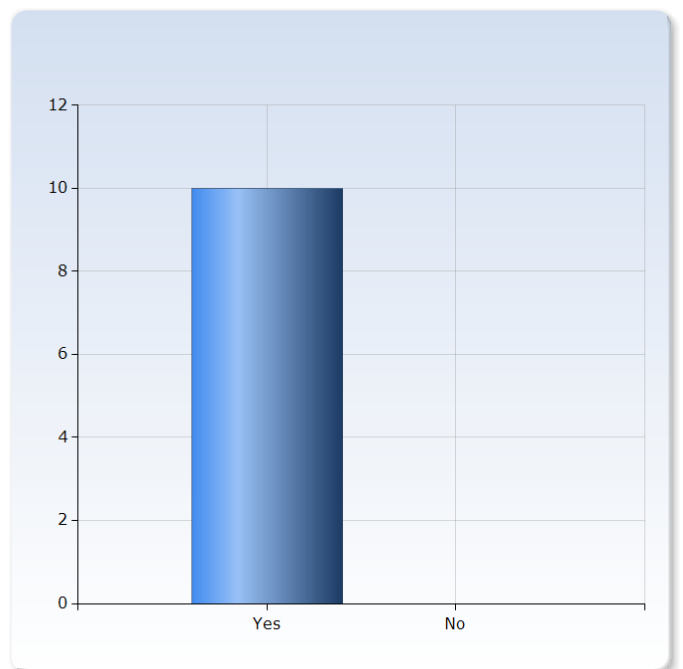
16. What is your opinion on the level of difficulty of the TA sessions by Gualtiero Azzalini? (1=Too easy, 5=To hard)

	Number of Responses
1	1 (10.0%)
2	1 (10.0%)
3	5 (50.0%)
4	1 (10.0%)
5	0 (0.0%)
Don't know	2 (20.0%)
Total	10 (100.0%)



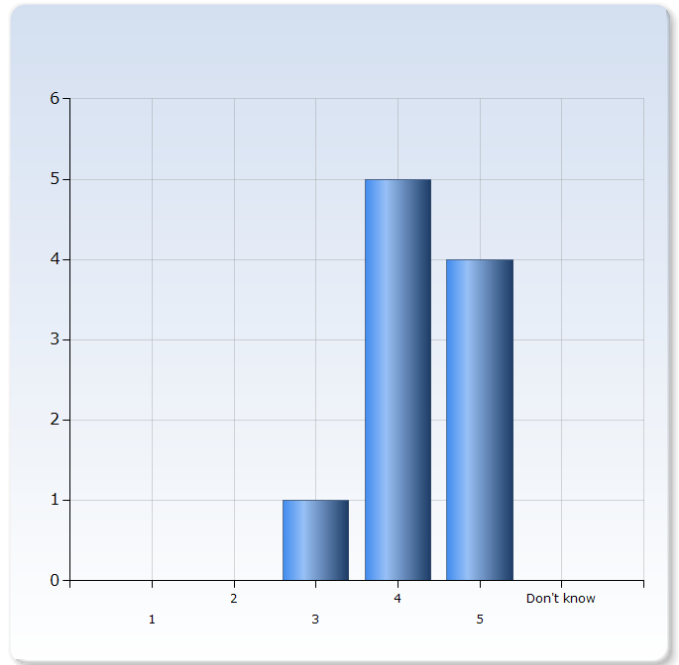
19. Did you complete the examination?

	Number of Responses
Yes	10 (100.0%)
No	0 (0.0%)
Total	10 (100.0%)



20. How well did the examination reflect the course in your view? (1=Really bad, 5=Really good)

	Number of Responses
1	0 (0.0%)
2	0 (0.0%)
3	1 (10.0%)
4	5 (50.0%)
5	4 (40.0%)
Don't know	0 (0.0%)
Total	10 (100.0%)



21. In case you know the result, did you pass the examination?

In case you know the result, did you pass the examination?	Number of Responses
Yes	0 (0.0%)
No	0 (0.0%)
Don't know	10 (100.0%)
Total	10 (100.0%)

